

Assembly Instructions



CAIMAN

Bluestreakequipment MAGNETICS
APPLICATION DRIVEN DESIGN

Bluestreak Equipment
1645 Hwy #3, Delhi, Ontario, Canada N4B 2W6

How it Ships

The Caiman Magnetic Sweeper is packaged and shipped on One pallet. When shipped internationally the Caiman is shipped in a ISPM-15 compliant international steel framed crate.



Unpacking Shipment



Remove Shrink
Wrap/Strapping/ Cardboard
from the pallet.

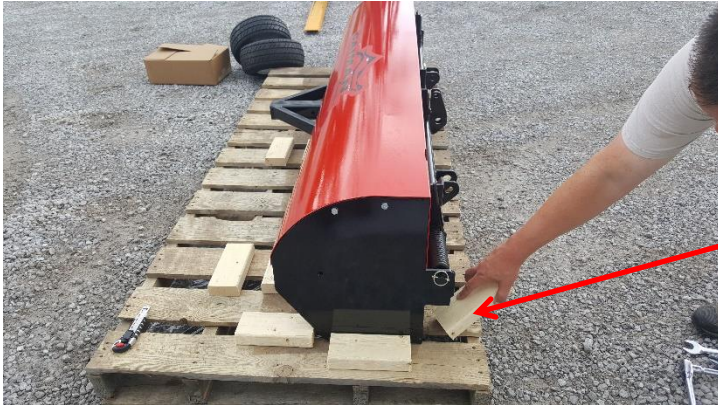
Parts on Pallet



Unpackage all items from the pallet and cardboard box.

- A – Wheels (2pcs)
- B – Jack (1pc)
- C – Coupler Assembly (1pc)
- D – Toplink (1pc)/Adjuster Rod (1pc)
- E – Bolt Bag (containing TopLink hardware) (1pc)
- F – Axle Pins (3 pcs) and Clips (3pcs)
- G – Bent Pins (2pcs)
- H – Suspension Axle Assembly (1pc)
- I – Release Handles (2pcs)
- J – Steel Tongue(1pc)

Removing From Pallet



Step 3

Remove the wooden blocks from backside of the Caiman magnetic sweeper.



Step 4

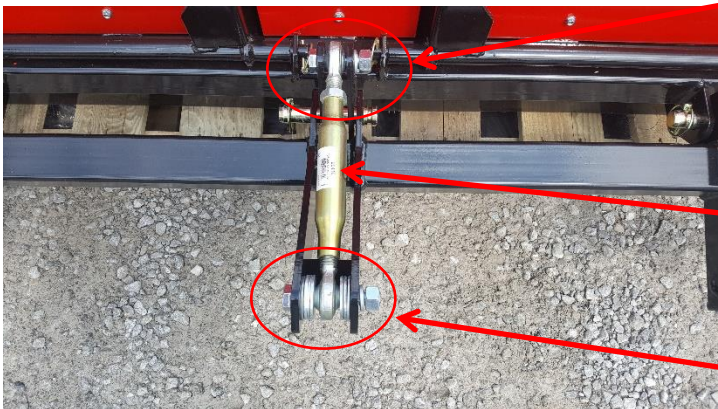
Slide the Caiman Magnetic Sweeper to the back edge of the pallet.

Assembly



Step 5

Connect Suspension Axle Assembly to the Sweepers Main Frame by inserting the 3 Axle Pins and Clips.



Front Connection (see step 7)

Step 6

Connect the Front and Rear of the TopLink to Main Frame and Rear Wheel Adjustment Frame using the hardware in the bolt bag. See next

Steps for further details.

Rear Connection (see step 8)

Assembly

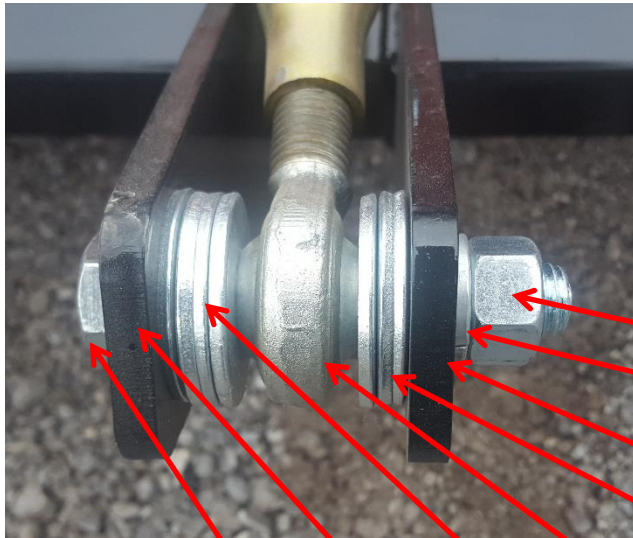


Step 7

Top Link Front Connection - Install one end of the Top Link (The end with the locking nut on it) as shown and tighten firmly with 2x 15/16" wrenches

- f) Nut
 - e) Lock Washer
 - d) Painted Steel Upright
 - c) Top Link
 - b) Painted Steel Upright
 - a) 5/8" x 2.5" Bolt
- Locking Nut

Assembly



Step 8

Top Link Rear Connection - Install the other end of the Top Link as shown and tighten firmly with 2x 15/16" wrenches

h) Nut

g) Lock Washer

f) Painted Steel Tab

e) 3 Washers

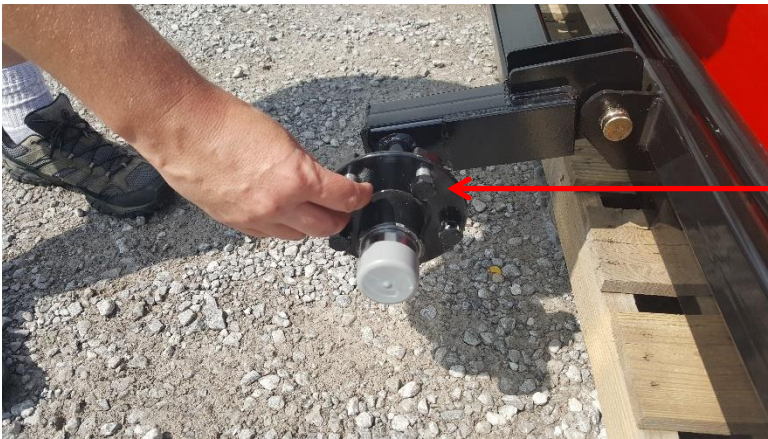
d) Top Link

c) 4 Washers

b) Painted Steel Tab

a) 5/8" x 3.5" long bolt

Assembly



Step 9

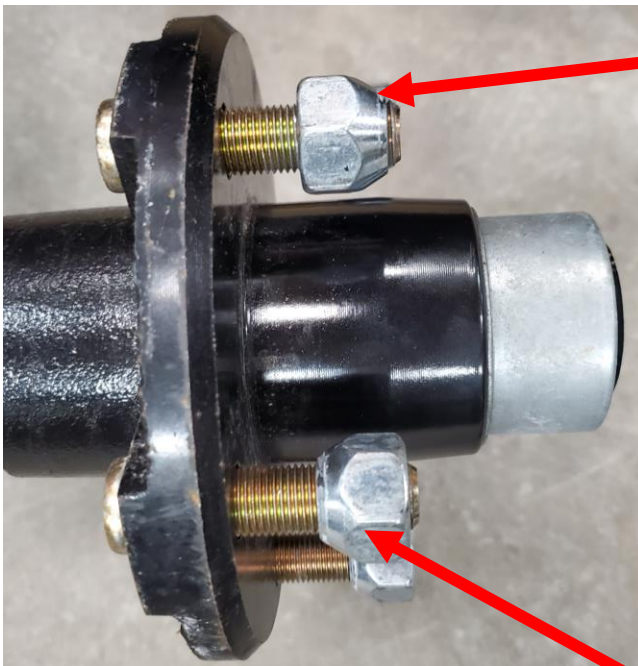
Remove Wheel Nuts from Spindle. Repeat on opposite side.



Step 10

Install wheel with valve stem Facing out. Tighten Wheel nuts to 75-85 ft. lbs using 13/16 Socket. Repeat on opposite side. *see special note on next page

Note on Proper Wheel Nut Installation



Wrong

Special note:

The photo to the left is showing the lug nuts on the threaded studs.

When installing the lug nuts the Cone must be facing inwards.

Correct

Assembly



Step 11

Install Release Handles on each end of the sweeper by removing the bolts that come in the handles, position the handle as shown and install and tighten bolts using a 9/16 Wrench

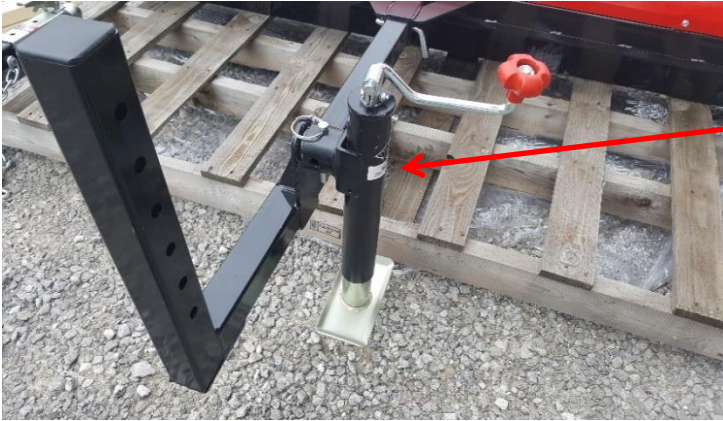


Step 12

Insert Steel Tongue into the Caiman magnetic sweeper.

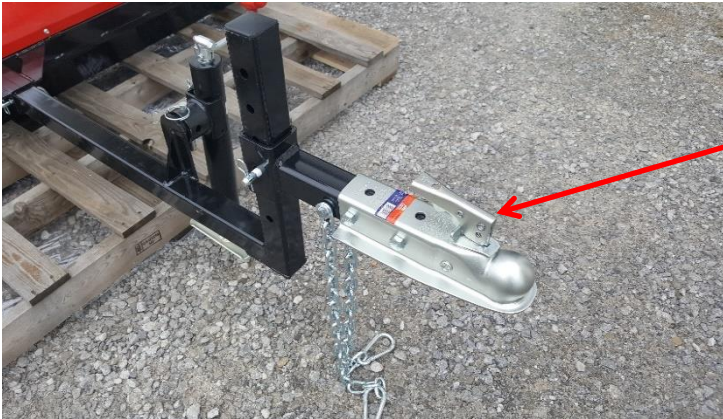
Insert a Bent Pin and Clip To secure Steel Tongue in Place.

Assembly



Step 13

Install the Jack onto the Steel Tongue.



Step 14

Install Coupler Assembly at the end of the Steel Tongue and insert a Bent Pin and clip to secure.

Assembly



Step 15

Remove the Caiman Magnetic Sweeper from the pallet.

The Assembly of the Caiman is now Complete!